



OS PRISCILLA HEINE
MOIS

FINDLAY GALLERIES

OS PRISCILLA HEINE
MOIS

FINDLAY GALLERIES

WALLY FINDLAY • DAVID FINDLAY JR

724 Fifth Avenue, 7th & 8th Floors • New York, New York 10019 • 212.421.5390 • 212.486.7660 • newyork@findlayart.com

165 Worth Avenue • Palm Beach, Florida 33480 • 561.655.2090 • palmbeach@findlayart.com

www.findlaygalleries.com

color and light.

there is buoyancy and longing in color and light. over and over again form is taken in gesture and dialogue— this dance, lightly stepping, nearly floating, between longing and buoyancy, buoyancy and longing-- mingling in one breath.

as levels of saturation travel seamlessly through walls, we remain alive and hopeful, nourishing stamina, witnessing magic, bowing to longing, bowing to buoyancy.

P. Heine



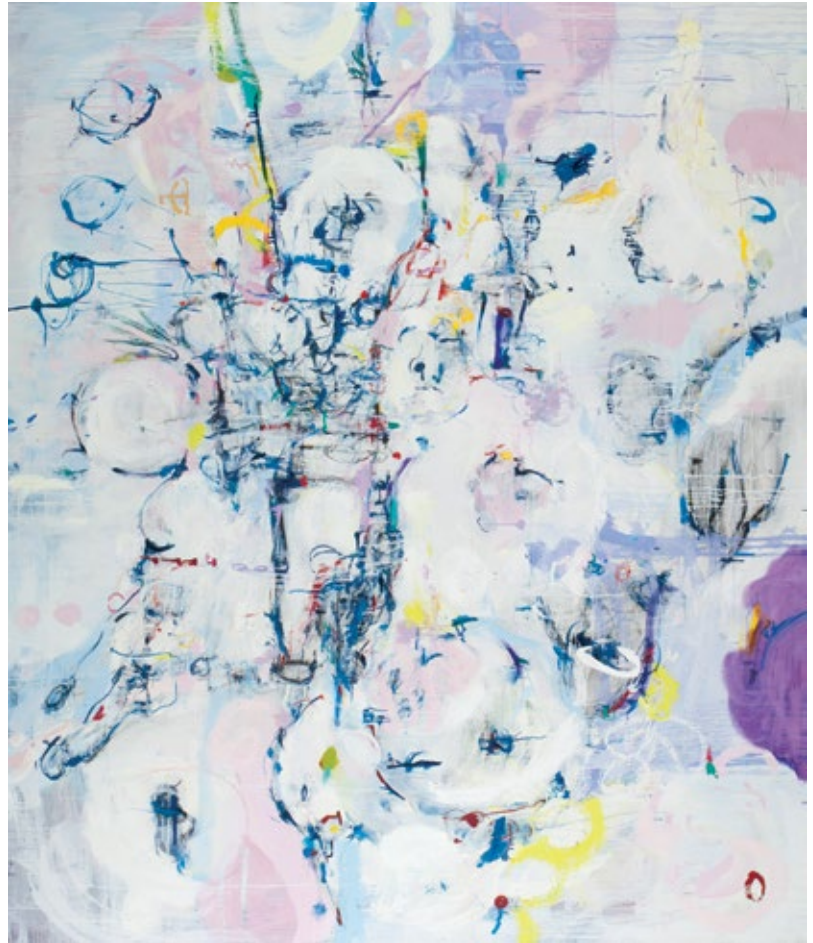
ODE TO SEX | OIL/LINEN | 68 X 80 INCHES | 137632



BUTTERCUP | OIL/LINEN | 24 X 24 INCHES | 137785



PANZIE | OIL/LINEN | 24 X 24 INCHES | 137784



OF ELEPHANTS AND FLUFF (DIPTYCH)
OIL/LINEN | 80 X 136 INCHES | 137754/55



FOR MY FATHER | OIL/LINEN
80 X 30 INCHES | 137767



REFERENCING BUTTERFLIES (DIPTYCH)
OIL/LINEN | 80 X 64 INCHES | 137610



SCARLET FEVER | OIL/LINEN
72 X 30 INCHES | 137771



GARDEN IN THE AIR | OIL/LINEN
80 X 66 INCHES | 137764



BALLS OF JUGGLE (DIPTYCH)
OIL/LINEN | 80 X 62 INCHES | 137778



HIGH LIGHT | OIL/LINEN
80 X 32 INCHES | 137779

“ since I was quite young, I believed that painting is just a recording of that time and that moment, it's about being very present, following an idea, following an idea, following an idea: showing a human being thinking a thought and just following it to the very end. ”





WATERING LOVE | OIL/LINEN
60 X 48 INCHES | 137776



THE OLD AND THE NEW | OIL/LINEN | 78 X 48 INCHES | 137773



ODE TO SUMMER AND PINK LINGERIE (DIPTYCH)
OIL/LINEN | 72 X 60 INCHES | 137766



TERRACED | OIL/LINEN
78 X 40 INCHES | 137770



ODE TO GOYA'S DOG | OIL/LINEN
80 X 32 INCHES | 137768



SATURATED LIGHT | OIL/COTTON RAG PAPER | 26 1/2 X 40 INCHES | 137740



CLARITY | OIL/GOUACHE/CHARCOAL/COTTON RAG PAPER | 55 X 51 INCHES | 137598



PHOTO CREDIT: DEBBIE SILVERBLANK

PRISCILLA HEINE

b. new york, 1956

Born in 1956, Priscilla Heine grew up in New York City. Aware from a very early age that painting and drawing were essential to her identity, she continually sought training through her formative years. Priscilla graduated from Tufts University with a Bachelor of Fine Arts degree in 1979 and was awarded a five-year diploma from the Museum School of Boston in the same year.

Heine has spent many summers on the Mediterranean as well as painting the rural landscape of Northern Vermont, where she maintains a studio. These experiences, combined with ten years of living on New York's lower East side, have provided the light and context for the psychological tensions that surface in her paintings. Priscilla Heine has engaged in many years of exploration and development ranging from color field painting to years of autobiographical representational material to austere landscapes and symbolic compositions inspired by a balance of internal and external landscapes. The elements of her drawing and painting combine to create a formal abstraction while allowing intimate references to weave in and out of layered paint. Since 1992, Priscilla Heine has lived with her husband Christian Majcherski and their two children Tomas and Alejo in East Hampton, New York. She has been exhibiting her work since 1981.

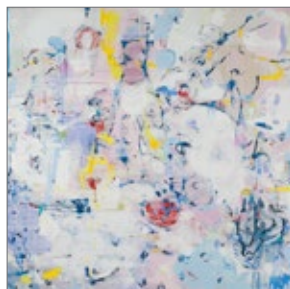
EXHIBITIONS

SOLO EXHIBITIONS

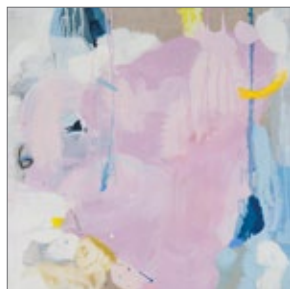
- 2016 Findlay Galleries, New York, NY | *Osmosis*
- 2015 Wally Findlay Galleries, New York, NY | *Personal Meaning*
- 2015 Wally Findlay Galleries, Palm Beach, FL | *Recent Works*
- 2013 Wally Findlay Galleries, New York, NY | *The Lightness in Me*
- 2012 Wally Findlay Galleries, Palm Beach, FL & New York, NY | *Solo Show*
- 2012 Islip Art Museum, Islip, NY | *Particules to Plexus*
- 2010 Wally Findlay Galleries, Palm Beach, FL | *Solo Show*
- 2009 Guild Hall, East Hampton, NY | *Bloom*
- 2009 Wally Findlay Galleries, New York, NY | *Solo Show*
- 2008 Pool Art Fair, Chelsea Hotel, New York, NY (with Moki Cherry)
- 2005 Wally Findlay Galleries, New York | *Lyrical Modernism*
- 2005 Wally Findlay Galleries, Palm Beach, | *Understated and Stimulated*
- 1998 Arlene Bujese Gallery, East Hampton, NY (2 Solo Shows, with Will Barnet)
- 1981 Rosenquist Studio, Springs, NY | *Priscilla Heine, Paintings*

GROUP EXHIBITIONS

- 2014 Wally Findlay Galleries, New York, NY | *50 Years on 57th Street*
- 2014 New additions to the Guild Hall Museum | *Permanent Collection*
- 2011 Islip Art Museum, Islip, NY | *Flag Day*
- 2009 Emily Harvey Gallery, New York, NY | *A Book About Death*
- 2008 Silas Marder Gallery, Bridgehampton, NY | *The Big Show*
- 2007 Ashawagh Hall, Springs, East Hampton, NY | *Spring Invitational (through 2013)*
- 2007 Ross School Gallery, East Hampton, NY | *Through the Eyes of A Dreamer*
- 2007 Guild Hall, East Hampton, NY | *Members Exhibit, Best in Show*
- 2005 Wally Findlay Galleries, New York, NY | *Modern Momentum*
- 2005 Wally Findlay Galleries, Palm Beach, FL | *Contemporary Lyricism*
- 2003 Ashawagh Hall, Springs, East Hampton, NY | *Peace Show*
- 2003 Sideshow Gallery, Brooklyn, NY | *Christmas Show, Merry, Merry (through 2004)*
- 2001 Adelphi University, New York, NY | *Abstraction; 6 Perspectives*
- 1998 Navarro Council Art Center, Corsicana, TX | *Juried Exhibition*
- 1997 Southampton Arts Council, Southampton, NY | *Salon des Femmes*
- 1997 Heckscher Museum, Huntington, NY | *Juried Exhibition, Award of Honor*
- 1995 Arlene Bujese Gallery, East Hampton, NY | *Group Show (through 2004)*
- 1994 Elaine Benson Gallery, Bridgehampton, NY | *Light Year*
- 1992 Bologna-Landi Gallery, East Hampton, NY | *Group Show (through 1993)*
- 1985 El Bohio Charas Gallery, New York, NY | *Group Show*
- 1985 Intar Theatre, New York, NY | *Paintings (through 1989)*
- 1983 Whitney Museum of Art, New York, NY | *Nam June Paik, Pyramid Piece, Performance*
- 1983 School of Visual Arts, New York, NY | *Bruna's Magnetic Performance*
- 1983 10th Avenue Bar, New York, NY | *Paintings on View, 1983*
- 1983 Charas Theatre, New York, NY | *Paintings for Jon Davies, 10 Stack Street*
- 1982 Brooklyn Waterfront Artists Show, Brooklyn, NY | *Group Show (through 1984)*
- 1979 Boston City Hall Show, Boston, MA | *Group Show*



ODE TO SEX | OIL/LINEN
68 X 80 INCHES | 137632



BUTTERCUP | OIL/LINEN
24 X 24 INCHES | 137785



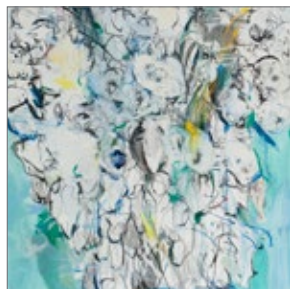
PANZIE | OIL/LINEN
24 X 24 INCHES | 137784



GARDEN IN THE AIR | OIL/LINEN
80 X 66 INCHES | 137764



TERRACED | OIL/LINEN
78 X 40 INCHES | 137770



FOR MY FATHER | OIL/LINEN
80 X 30 INCHES | 137767



ODE TO GOYA'S DOG | OIL/LINEN
80 X 32 INCHES | 137768



AH'S LAVANDA | OIL/LINEN
23 X 16 INCHES | 137790



WATERING LOVE | OIL/LINEN
60 X 48 INCHES | 137776



THE OLD AND THE NEW | OIL/LINEN
78 X 48 INCHES | 137773



MARKET AT MIDNIGHT | OIL/LINEN
80 X 56 INCHES | 137772



HIGH LIGHT | OIL/LINEN
80 X 32 INCHES | 137779



ODE TO SUMMER AND LINGERIE (DIPTYCH)
OIL/LINEN | 72 X 60 INCHES | 137766



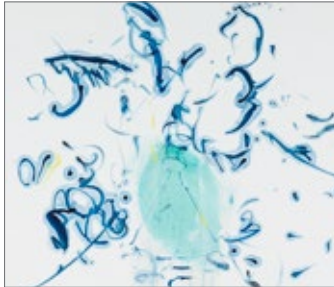
BALLS OF JUGGLE (DIPTYCH)
OIL/LINEN | 80 X 62 INCHES | 137778



REFERENCING BUTTERFLIES (DIPTYCH)
OIL/LINEN | 80 X 64 INCHES | 137610



SCARLET FEVER | OIL/LINEN
72 X 30 INCHES | 137771



WITH EASE (DIPTYCH) OIL/LINEN
24 X 48 INCHES | 137782



HOSTAS' | CHARCOAL/PAPER
60 X 52 INCHES | 137747



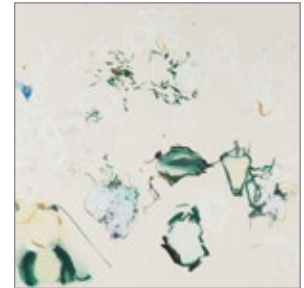
SATURATED LIGHT | OIL/PAPER
26 1/2 X 40 INCHES | 137740



OF ELEPHANTS AND FLUFF (DIPTYCH)
OIL/LINEN | 80 X 136 INCHES | 137754/55



CLARITY | OIL/GOUACHE/CHARCOAL/PAPER
55 X 51 INCHES | 137598



STUDY FOR MY FATHER
GOUACHE/GRAPHITE/PAPER
26 1/2 X 40 INCHES | 137752



FINDLAY GALLERIES

For further information and pricing of
these artworks please contact the gallery:

New York

212.421.5390 | 212.486.7660

newyork@findlayart.com

724 Fifth Avenue, 7th & 8th Floors

New York, New York | 10019

Palm Beach

561.655.2090

palmbeach@findlayart.com

165 Worth Avenue

Palm Beach, Florida | 33480

WWW.FINDLAYGALLERIES.COM

Copyright © 2016, Findlay Galleries, All rights reserved. No part of the images or text in this catalogue may be duplicated without permission of Findlay Galleries. Prices and availability of artwork featured in this catalogue are subject to change without notice.

An abstract painting featuring a vibrant palette of colors including yellow, blue, pink, red, and teal. The composition is dominated by large, expressive brushstrokes and splatters. A prominent dark blue shape is visible in the upper left, and a bright yellow shape is in the upper right. The background is a mix of light blue and white, with various colored elements scattered throughout, creating a dynamic and energetic visual field.

FINDLAY GALLERIES

165 WORTH AVENUE, PALM BEACH, FLORIDA 33480 · 561.655.2090

724 FIFTH AVENUE, 7TH & 8TH FLOORS, NEW YORK, NEW YORK 10019 · 212.421.5390

WWW.FINDLAYGALLERIES.COM