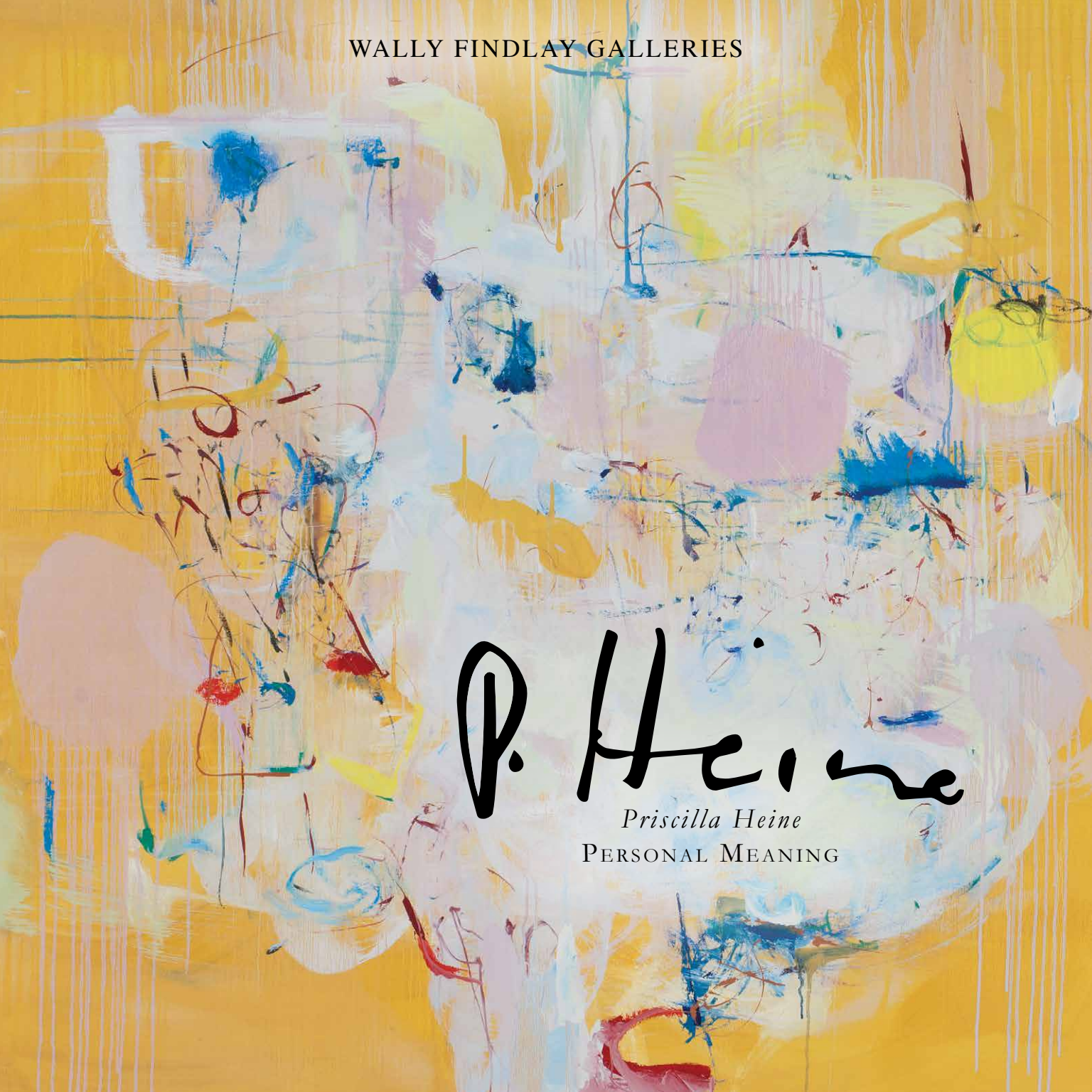


WALLY FINDLAY GALLERIES

An abstract painting with a vibrant yellow background. The composition is filled with expressive brushstrokes and splatters in various colors, including white, light blue, dark blue, red, and pink. The strokes are layered and overlapping, creating a sense of depth and movement. The overall effect is one of dynamic energy and personal expression.

P. Heine

Priscilla Heine

PERSONAL MEANING



ARTIST STATEMENT

Priscilla Heine

“Corinthian columns bathed in diagonal lines of wide sun and cool shade,
Doric order, vesseled balustrades.

Crowds gathering, dispersing. The palace at midnight.
It is good fortune to paint across the street from Teatro Solis, Montevideo.”

CA. 1950 MISSION STATEMENT FOR HUNTER COLLEGE OF ART

Robert Motherwell

“Art is one way of exploring the world. In teaching, more experienced people lead the less experienced to new experiences, to an exploration of the world of art -- its past, its present, and above all its future possibilities. Naturally, to explore means that one is adventurous -- that one is capable of experimenting, of intellectual independence, and in art one must also have a warm heart. All these things together make up the human imagination, and it is imagination that transforms neutral facts and materials into something with *personal meaning*.”



Circus | oil on linen | 90 x 50 inches | WFG© 135106



Tango Solo | oil on linen | 84 x 48 inches | WFG© 136432



Nilla Velvet | oil on linen | 80 x 32 inches | WFG© 135116



Pairing | oil on linen | 80 x 32 inches | WFG© 136433



Sitting | oil on linen | 68 x 80 inches | WFG© 131946



Citadel | mixed media on canvas | 60 x 60 inches | WFG© 128904



Lavender Lush Slush | oil on linen | 60 x 46 inches | WFG© 136244



Stack | oil on linen | 60 x 40 inches | WFG© 136430



Fly By | oil on canvas | 60 x 52 inches | WFG© 136429



Golden Bloom | oil on linen | 47 x 55 inches | WFG© 136431



Garden Roars | mixed media on canvas | 55 x 47 inches | WFG© 128899



Training | oil on linen | 48 x 42 inches | WFG© 136434



Dance and Sing | oil on board | 27 x 21 inches | WFG© 135112

In a Wave | oil on canvas | 36 x 24 inches | WFG© 136428



Light in Sienna | oil on canvas | 36 x 24 inches | WFG© 136426



Conversation in the Clouds | oil on canvas | 36 x 24 inches | WFG© 136427



Untitled | oil on canvas | 22 x 23 1/4 inches | WFG© 129400



Forsythia Over Lavender Sea | oil, gouache, graphite & charcoal on paper | 72 x 52 inches | WFG© 136435



Hens | oil, gouache, graphite & charcoal on paper | 63 x 52 inches | WFG© 136436



Thoughts on Lilies | oil, gouache, graphite & charcoal on paper | 63 x 52 inches | WFG© 136437



Ground Thaw | oil, gouache, graphite & charcoal on paper | 48 x 52 inches | WFG© 136438



Cruisin' on a Fine Day | oil, gouache, graphite & charcoal on paper | 51 1/2 x 60 inches | WFG© 136239



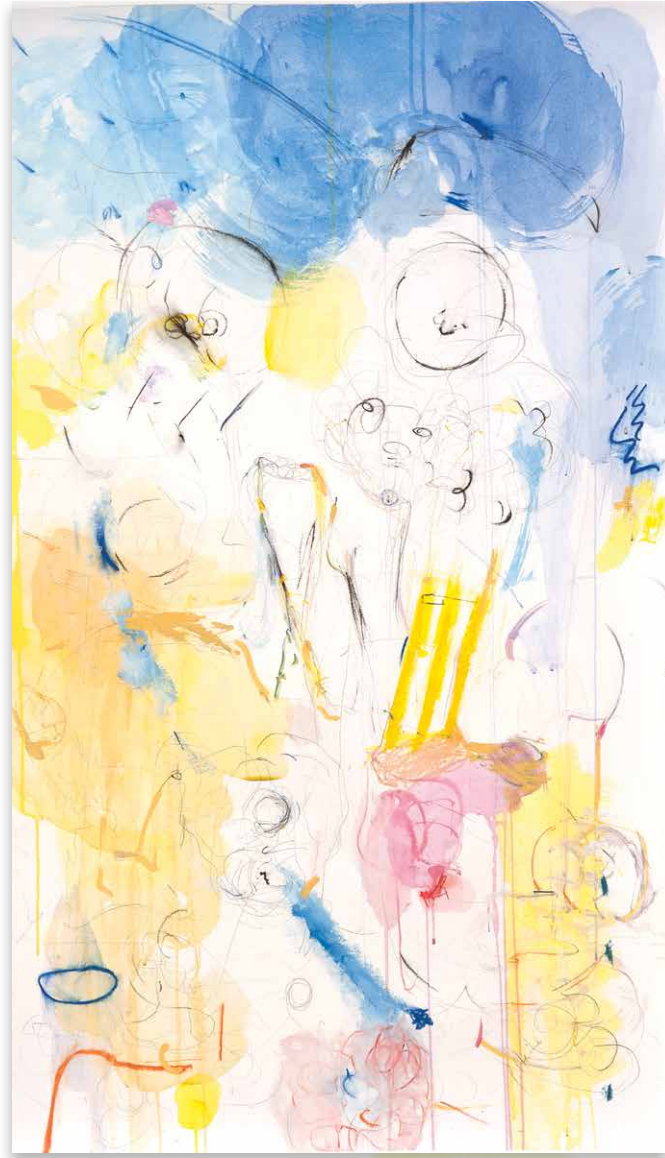
Vestige of Dawn | oil on linen | 48 x 48 inches | WFG© 135121



Teatro Solis I | oil, gouache, graphite & charcoal on paper | 46 x 26 ¹/₂ inches | WFG© 136398



Teatro Solis II | oil, gouache, graphite & charcoal on paper | 46 x 26 ¹/₂ inches | WFG© 136399



Teatro Solis III | oil, gouache, graphite & charcoal on paper | 46 x 26 ¹/₂ inches | WFG© 136400



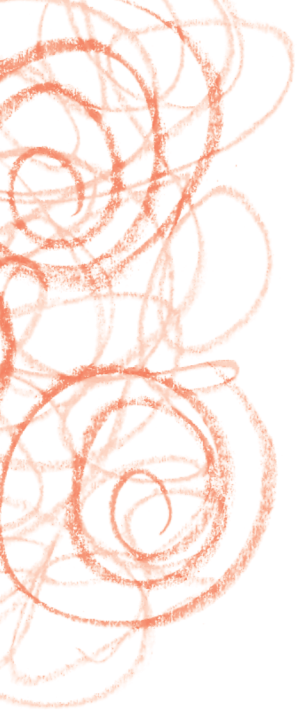
Teatro Solis IV | oil, gouache, graphite & charcoal on paper | 46 x 26 ¹/₂ inches | WFG© 136401



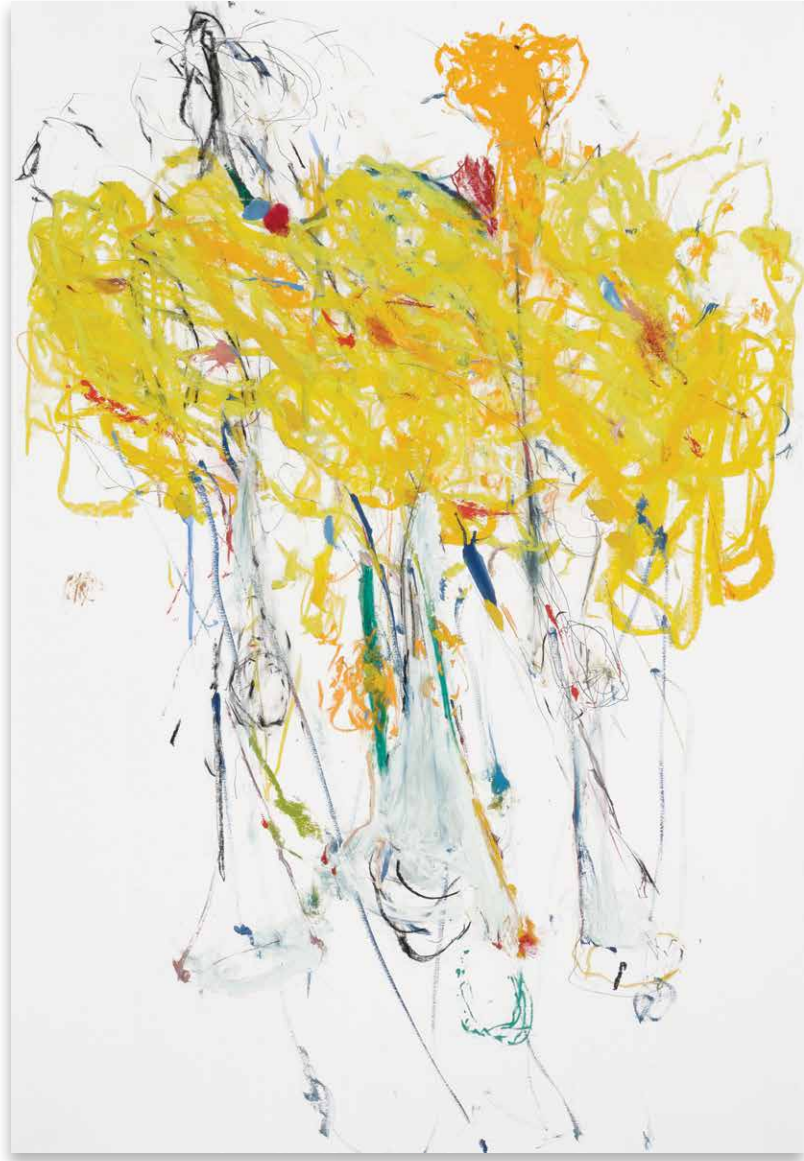
Teatro Solis V | oil, gouache, graphite & charcoal on paper | 46 x 26 ¹/₂ inches | WFG© 136402



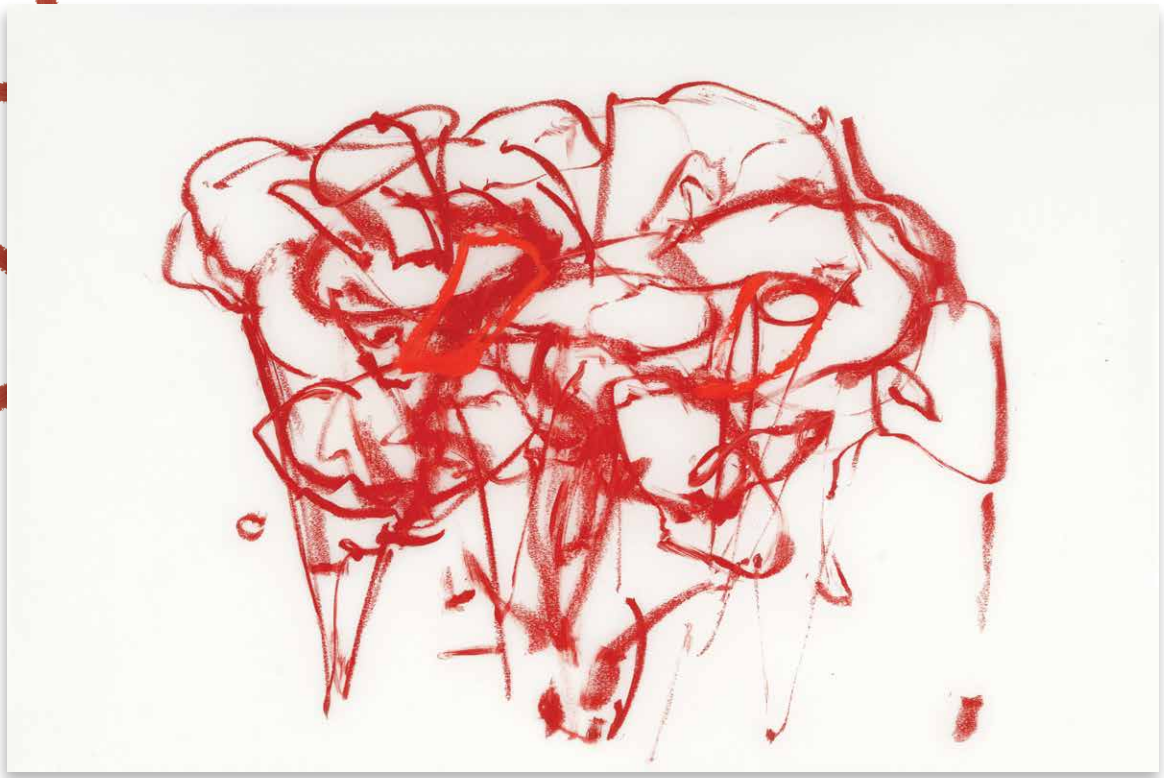
Teatro Solis VI | oil, gouache, graphite & charcoal on paper | 46 x 22inches | WFG© 136403



At the Beach | oil, crayon, charcoal & pencil on paper | 49 x 22 inches | WFG© 134782



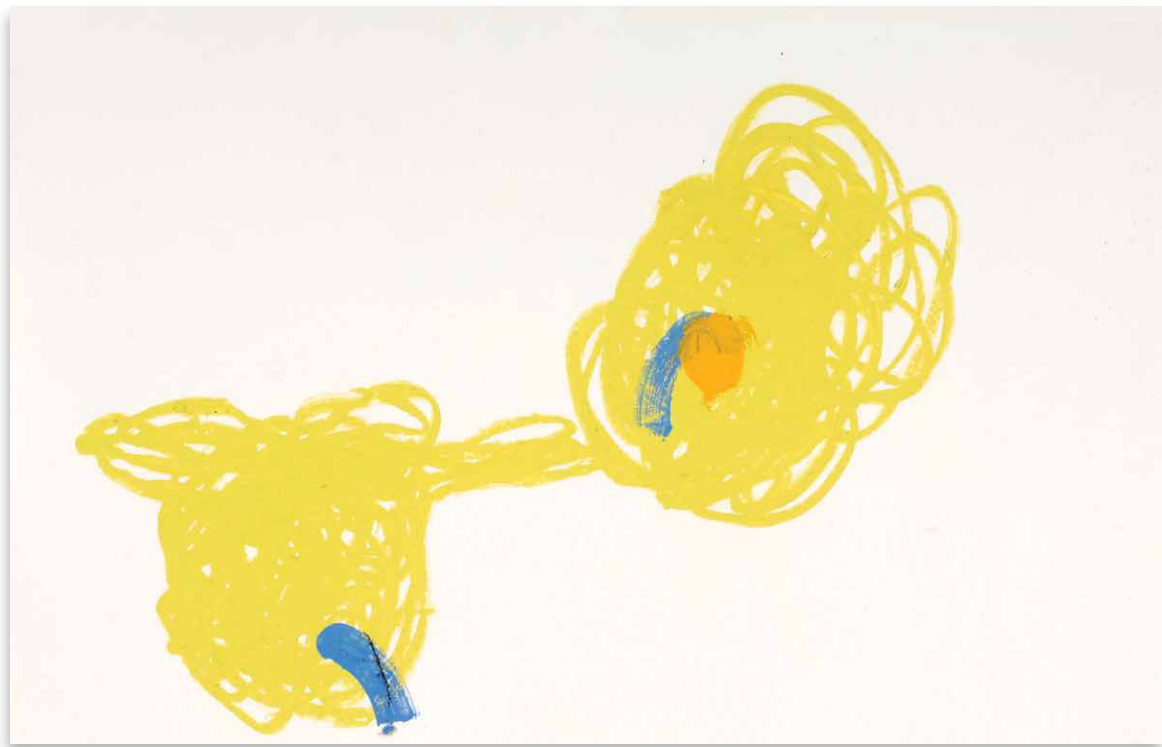
Gold Rush | oil, graphite & pastel on paper | 51 x 35 inches | WFG© 134278



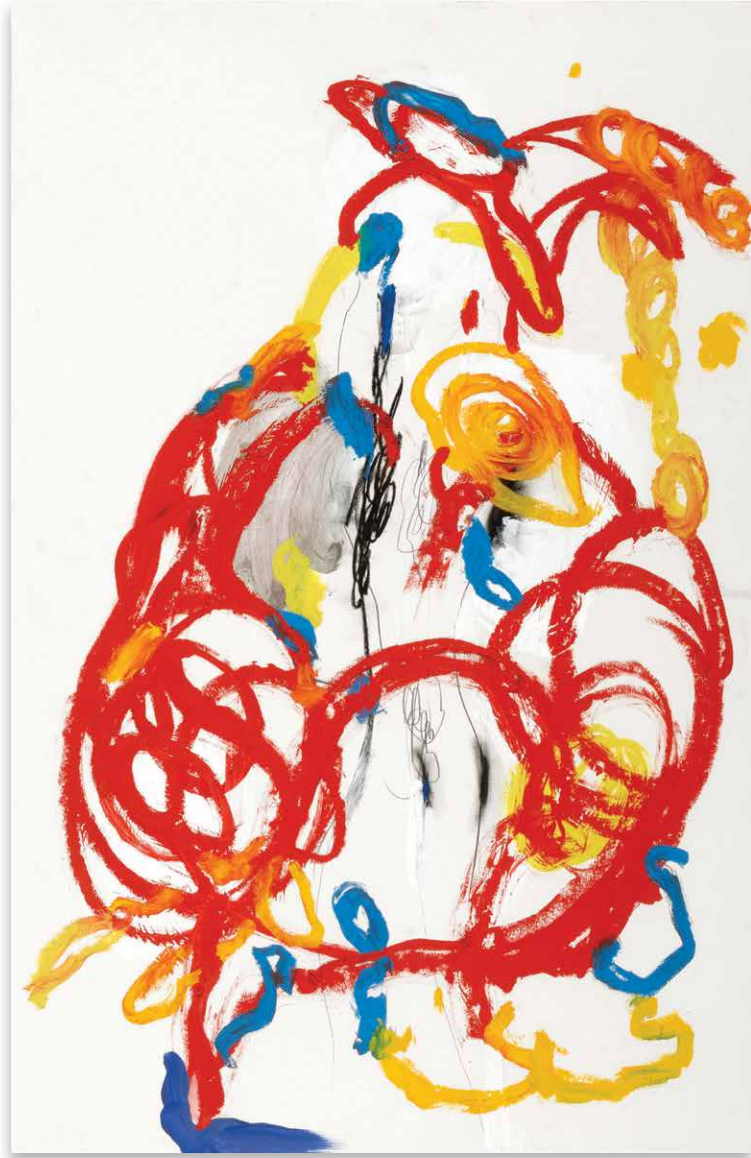
Day Lily Patch 2 | oil crayon on vellum | 38 x 45 inches | WFG© 134791



Masked Together | oil, graphite & pastel on paper | 26 1/2 x 40 inches | WFG© 134280



Buddy | oil crayon on paper | 26 x 40 inches | WFG© 134780



Study for Mr. Sweetlove | oil, crayon, charcoal & pencil on paper | 40 x 26 inches | WFG© 134781



A Garden in the Air | gouache on paper | 20 x 14 inches | WFG© 135108



Baby's Ball | oil, graphite & pastel on paper | 20 x 26 ^{1/2} inches | WFG© 134281



Jaunty Perch | oil, graphite & pastel on paper | 20 x 26 ^{1/2} inches | WFG© 134282

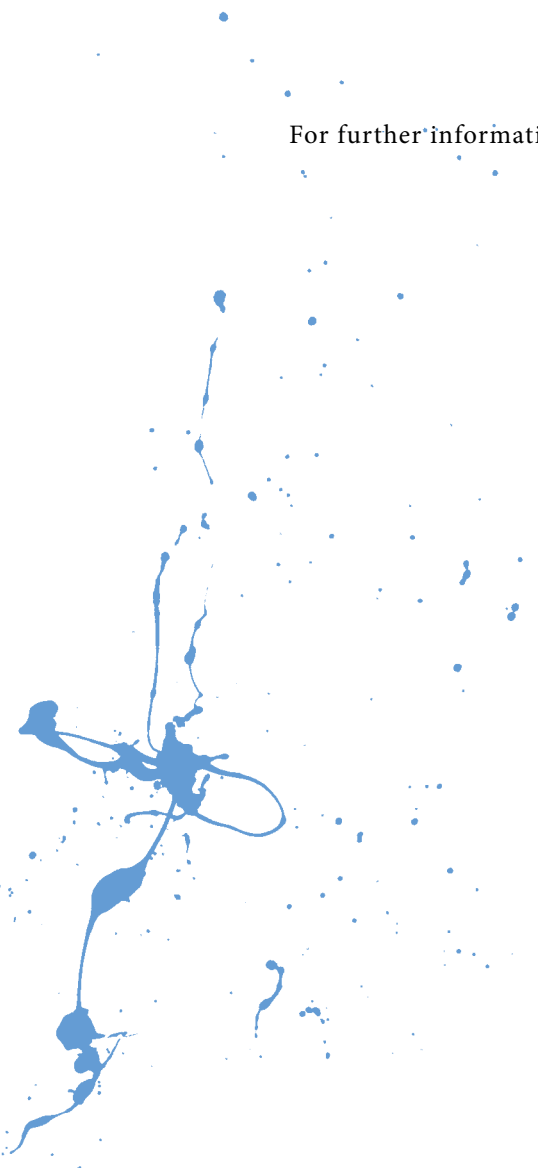
Solo Shows

- 2015 Wally Findlay Galleries, Palm Beach, FL | *Recent Works*
- 2013 Wally Findlay Galleries, New York, NY | *The Lightness in Me*
- 2012 Wally Findlay Galleries, Palm Beach, FL & New York, NY
- 2012 Islip Art Museum, Islip, NY
- 2010 Wally Findlay Galleries, Palm Beach, FL
- 2009 Guild Hall, East Hampton, NY | *Bloom*
- 2009 Wally Findlay Galleries, New York, NY
- 2008 Pool Art Fair, Chelsea Hotel, NY
- 2005 Wally Findlay Galleries, New York | *Lyrical Modernism*
- 2005 Wally Findlay Galleries, Palm Beach, | *Understated and Stimulated*
- 1998 Arlene Bujese Gallery, East Hampton, NY
- 1981 Rosenquist Studio, Springs, NY | *Priscilla Heine Paintings*

Group Shows

- 2014 Guild Hall, East Hampton, NY | *New Additions to the Permanent Collection*
- 2012 Ashawagh Hall, Springs, East Hampton, NY | *Springs Invitational*
- 2011 Islip Art Museum, Islip, NY | *Flag Day*
- 2011 Wally Findlay Galleries, Palm Beach, FL & New York, NY | *Abstract 3*
- 2010 Wally Findlay Galleries, New York, NY | *Gallery Collection*
- 2009 Wally Findlay Galleries, Los Angeles, CA & Palm Beach, FL | *Summer Selections*
- 2009 Wally Findlay Galleries, New York, NY | *Through the Eyes of Women*
- 2008 Wally Findlay Galleries, New York, NY | *Modern Momentum*
- 2007 Ashawagh Hall, Springs, East Hampton, NY | *Spring Invitational*
- 2007 Guild Hall, East Hampton, NY | *Members Exhibit, Best in Show*
- 2006 Guild Hall, East Hampton, NY | *Members Exhibit*
- 2006 Wally Findlay Galleries, New York, NY | *Art for the Young Collector*
- 2006 Wally Findlay Galleries, Palm Beach, FL | *Drawings and Works on Paper*
- 2005 Wally Findlay Galleries, Palm Beach, FL | *Contemporary Lyricism*
- 2003 Ashawagh Hall, Springs, East Hampton, NY | *Peace Show*
- 2003 Nasser Nakib Architect, NY | *Priscilla Heine and Cassandra Sulter*
- 2002 Guild Hall, East Hampton, NY | *Members Exhibit*
- 2001 Adelphi University, New York, NY | *Abstraction; 6 Perspectives*
- 1998 Navarro Council Art Center, Corsicana, TX | *Juried Exhibition*
- 1997 Southampton Arts Council, Southampton, NY | *Salon des Femmes*
- 1997 Heckscher Museum, Huntington, NY | *Juried Exhibition, Award of Honor*
- 1995 Heckscher Museum, Huntington, NY | *Juried Exhibition*
- 1985 Intar Theatre, New York, NY | *Paintings*
- 1984 10th Avenue Bar, New York, NY | *Group Show*
- 1983 Whitney Museum of Art, New York, NY | *Nam June Paik, Pyramid Piece, Performance*
- 1983 School of Visual Arts, New York, NY | *Bruna's Magnetic Performance*
- 1983 10th Avenue Bar, New York, NY | *Paintings on View, 1983*
- 1983 Charas Theatre, New York, NY | *Paintings for Jon Davies, 10 Stack Street*
- 1983 Brooklyn Waterfront Artists Show, Brooklyn, NY
- 1982 Brooklyn Waterfront Artists Show, Brooklyn, NY
- 1981 Bridgehampton BAM Show, Bridgehampton, NY | *3 Painters*
- 1979 Boston City Hall Show, Boston, MA





For further information and pricing of these artworks please contact the gallery:

New York

+ 1 (212) 421 5390

newyork@wallyfindlay.com

Gallery Hours:

Tuesday | Saturday : 10 am | 6 pm

Palm Beach

+ 1 (561) 655 2090

palmbeach@wallyfindlay.com

Gallery Hours:

Monday | Saturday : 10 am | 6 pm