

An abstract painting with a vibrant, layered composition. The top section features a yellow background with a large, textured white shape on the right and a red, textured shape on the left. Below this, a horizontal band of light blue and white contains a dark, abstract form. The middle section is dominated by a large, textured white circle with a yellow and purple brushstroke across its center, set against a light blue background. Below this, a yellow, textured shape is visible. The bottom section features a dark blue background with two white, stylized, fish-like or shell-like shapes. On the right side, there are brown and tan textured areas with green and blue brushstrokes. The overall style is expressive and colorful, with visible brushwork and a sense of depth.

Priscilla
H E I N E

FINDLAY GALLERIES



Bare Bones • oil/linen • 78 x 50 inches • 138503



Riding on a Cloud • oil/linen • 80 x 64 inches • 138498 (Diptych)



Float
oil/linen
80 x 56 inches
138494



Iconic Heart
oil/linen
76 x 48 inches
138495

Born in 1956, Priscilla Heine grew up in New York City. Aware from a very early age that painting and drawing were essential to her identity, she continually sought training through her formative years. Priscilla graduated from Tufts University with a Bachelor of Fine Arts degree in 1979 and she was awarded a five year diploma from the Museum School of Boston in the same year.

Priscilla has spent many summers in the Mediterranean and other summers painting the rural landscape of Northern Vermont, where she maintains a studio. Combining these experiences with ten years of living on New York's Lower East Side in the Eighties, have provided the light and context for the psychological tensions that surface in her paintings.

Priscilla Heine has engaged in many years of exploration and development ranging from color field painting, to years of autobiographical representational material, to austere landscapes and symbolic compositions inspired by a balance of internal and external landscapes. The elements of her drawing and painting combine to create a formal abstraction while allowing intimate references to weave in and out of layered paint.

Since 1992, Priscilla has lived with her husband Christian Majcherski and their two children Tomas and Alejo in East Hampton, New York. She has been exhibiting her work since 1981.

Priscilla HEINE

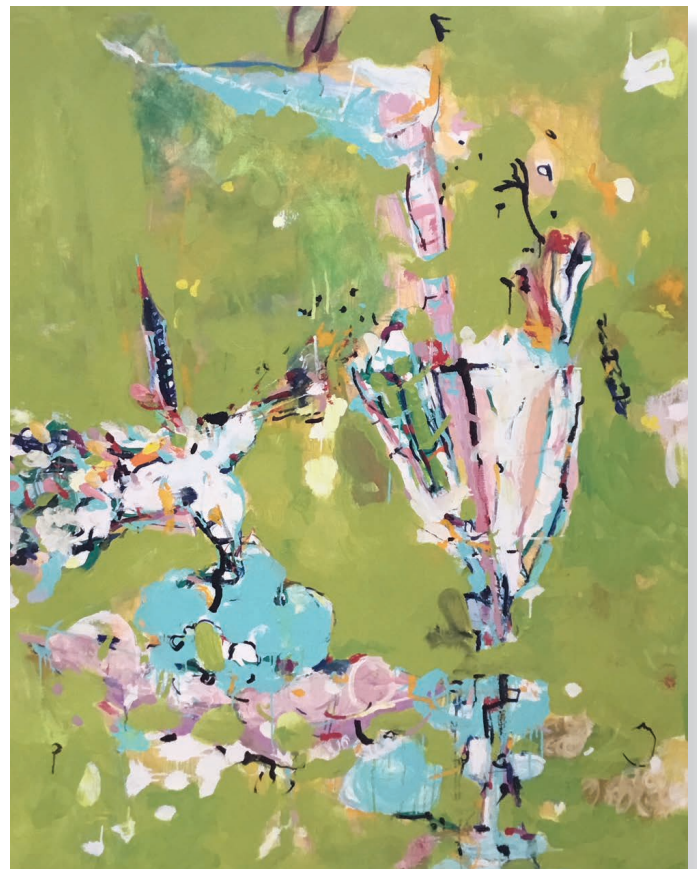
“ENGAGING THE SUBLIME”

“I see my work as a language, a visual dialogue, that is both personal and intuitive. The world is stunning in its beauty and its suffering. The practice of creative work is ever hopeful. Simplifying a complexity inherent in my perception of both nature and narrative, I begin with a momentary rapture of the quotidian, riding a memory that is seen but also deeply felt. Through the stimulation of beauty and reference, I tap and trigger intimate interpretation, generating by moving fluidly between realities and dreams, the immediate world and the internal world, the release of energy in both nature and narrative. The rhythm of the everyday amazes, nourishes, and astounds. It is a physical, layered experience. Recognizing beauty and compassion as a sage I wish to follow, I allow for a process that embraces instinct and impulse, buoyancy and longing.”

- Priscilla Heine, 2018



Medicine Dance
oil/linen
60 x 48 inches
138497



Blustery Spring
oil/linen
60 x 48 inches
138493



Share the Light
oil/linen
50 x 78 inches
138499



Wetlands
oil/linen
68 x 80 inches
138500
Cover (Detail)



Love on a Mountain
oil/linen
48 x 48 inches
138496



Cameo
oil/linen
32 x 80 inches
138504

I make art to make sense of this world in which we live. A heavy black charcoal mark on rich white paper is breaking silence. Making marks is a beginning to identity.

P Heine



Visitar el Jardin
oil/linen
32 x 80 inches
138517



ATTENTION!
oil/linen
80 x 32 inches
138502



Hike Among
oil/linen
80 x 56 inches
138505



Just So
oil/linen
32 x 80 inches
138506



Shadow Dream
oil/linen
50 x 90 inches
138511



Yummy Dream
oil/linen
60 x 48 inches
138518



Two Vessels
oil/linen
48 x 80 inches
138516



Southwest Vegetation
oil/linen
24 x 24 inches
138512



Northeastern Pines
oil/wood
24 x 24 inches
138513

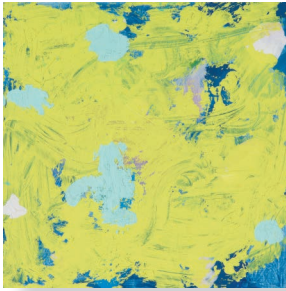
SMALL WORKS



Love to Play 2
oil/wood
8 x 8 inches
138508



Love to Play
oil/wood
8 x 8 inches
138509



Sun-Day
oil/wood
8 x 8 inches
138514



Lovely Vista
oil/wood
8 x 8 inches
138510



Altogether
oil/linen
8x 10 inches
138501

ENGAGING THE **SUBLIME**

There is buoyancy and longing in color and light, over and over again form is taken in gesture and dialogue — this dance, lightly stepping, nearly floating, between longing and buoyancy, buoyancy and longing — mingling in one breath.

As levels of saturation travel seamlessly through walls, we remain alive and hopeful, nourishing stamina, witnessing magic, bowing to longing, bowing to buoyancy. — P. Heine



FINDLAY GALLERIES

165 Worth Avenue • Palm Beach, Florida 33480 • 561.655.2090 • palmbeach@findlayart.com
724 Fifth Avenue, 7th Floor • New York, New York 10019 • 212.421.5390 • newyork@findlayart.com

WWW.FINDLAYGALLERIES.COM

Copyright © 2018, Findlay Galleries, All rights reserved. No part of the images or text in this catalogue may be duplicated without permission of Findlay Galleries. Prices and availability of artwork featured in this catalogue are subject to change without notice.